

An economic development approach that is working to make sure that all communities are connected to the Pittsburgh Region's Economic prosperity.

THE “INCLUSIVE INNOVATION” APPROACH

PITTSBURGH'S NEW ECONOMY

Today, the Pittsburgh region's prosperity is powered by five key industry sectors: advanced manufacturing, energy, financial and business services, health care and life sciences and information and communications technology. They are the result of a economic transformation launched in the early 1980s, as the steel industry restructured and the region lost more than 100,000 jobs and will provide the basis for a 21st Century economy

CONNECTING COMMUNITIES LEFT BEHIND

CHALLENGES:

The region's economic transformation has not benefitted all communities. Despite our success, poverty exists throughout the region. This contrast can most readily be seen in Pittsburgh's diverse neighborhoods where high-income communities are directly adjacent to very low-income communities.

A SOLUTION

Urban Innovation21 is a unique public-private partnership that is supporting the growth of entrepreneurship in our region's innovation economy and connecting that growth to underserved communities and the residents that live in those communities. UI-21 began as a KIZ, a focused program sponsored by the Pennsylvania DCED to encourage small businesses through tax incentives and support. It has now grown into a regional organization.

OUR PARTNERS



PITTSBURGH CENTRAL KEYSTONE INNOVATION ZONE



INCENTIVES SINCE 2007

KIZ TAX CREDIT PROGRAM

\$6.4 million in direct cash assistance to over 45 companies

PCKIZ GRANT PROGRAM

\$462,000 in early-stage grant funding to 24 companies

PCKIZ INTERNSHIP PROGRAM

600+ paid student internships-
55% female, 38%
underrepresented minorities

ECONOMIC DEVELOPMENT

\$4m+ in direct funding for Hill District-based economic-development organizations

PCKIZ CONSORTIUM

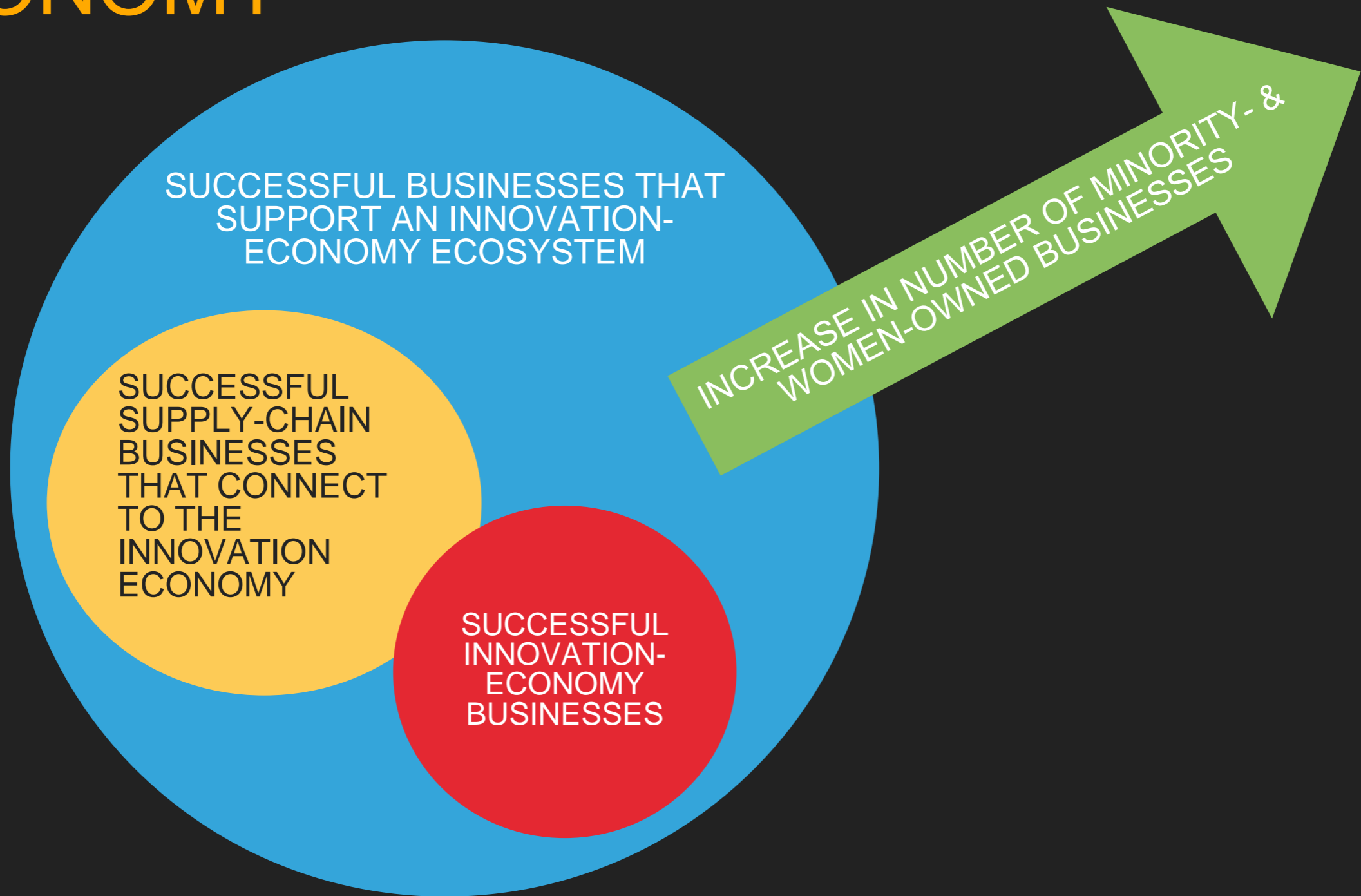
Community partnerships to provide leadership & help coordinate economic-development activities

DIVERSE INTERNSHIP AND WORKFORCE-DEVELOPMENT TRAINING PROGRAMS

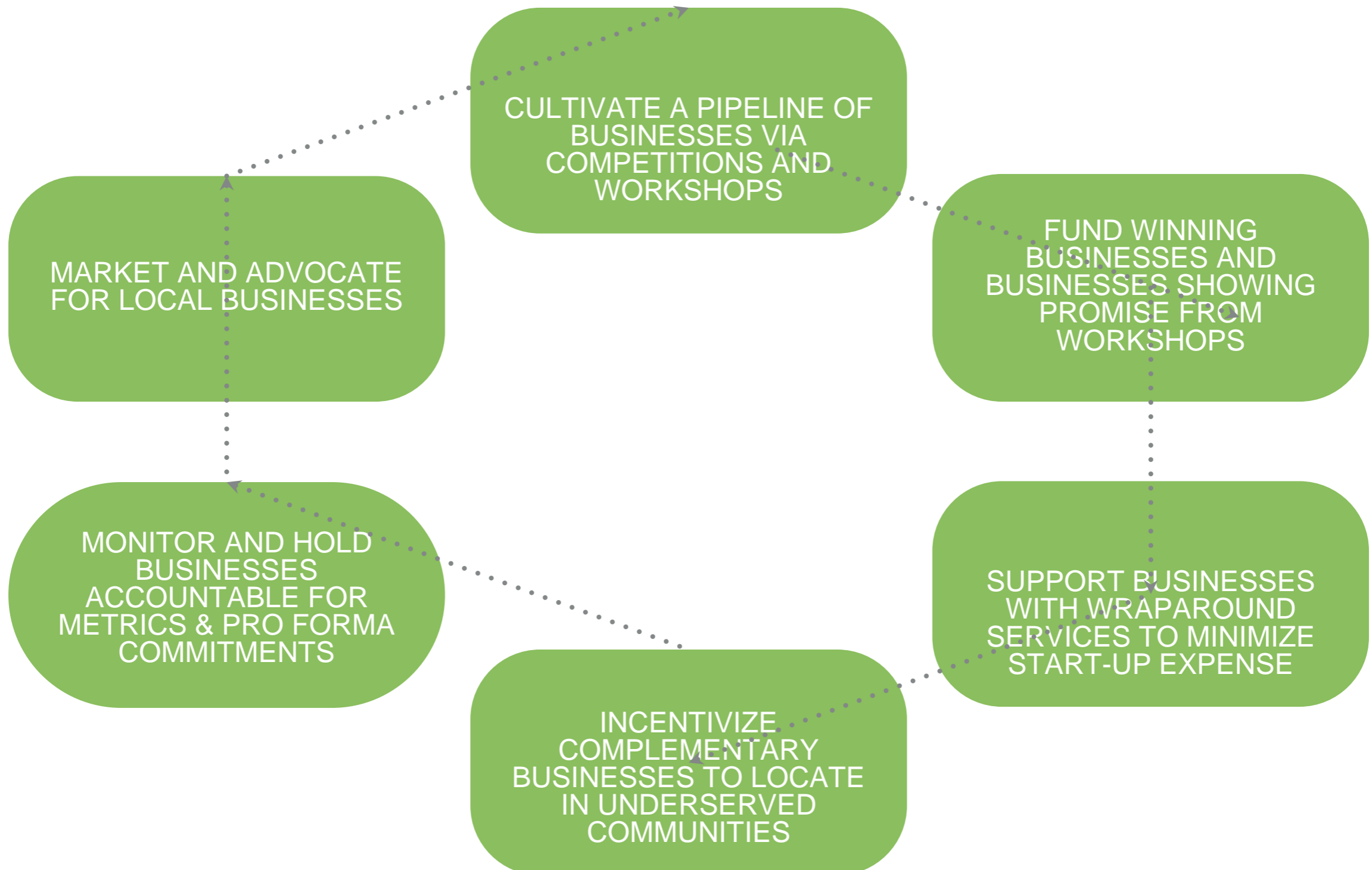




CREATING AN INCLUSIVE INNOVATION ECONOMY



OUR LOGIC MODEL FOR DISCIPLINED BUSINESS CREATION



SUCCESSFUL COMMUNITY-BASED ENTREPRENEURS

- ▶ *GOAL: Create a cluster of businesses, owned by residents of underserved communities, that are connected to and profiting from our region's new prosperity.*
- ▶ UI21 works with hundreds of community-based entrepreneurs
- ▶ Successful entrepreneurs are connected through contracts with anchor institutions
- ▶ Grant competitions provide wraparound services to dozens of businesses annually
- ▶ KivaZip crowdfunding
 - ▶ \$46k in zero-interest loans to 11 borrowers

